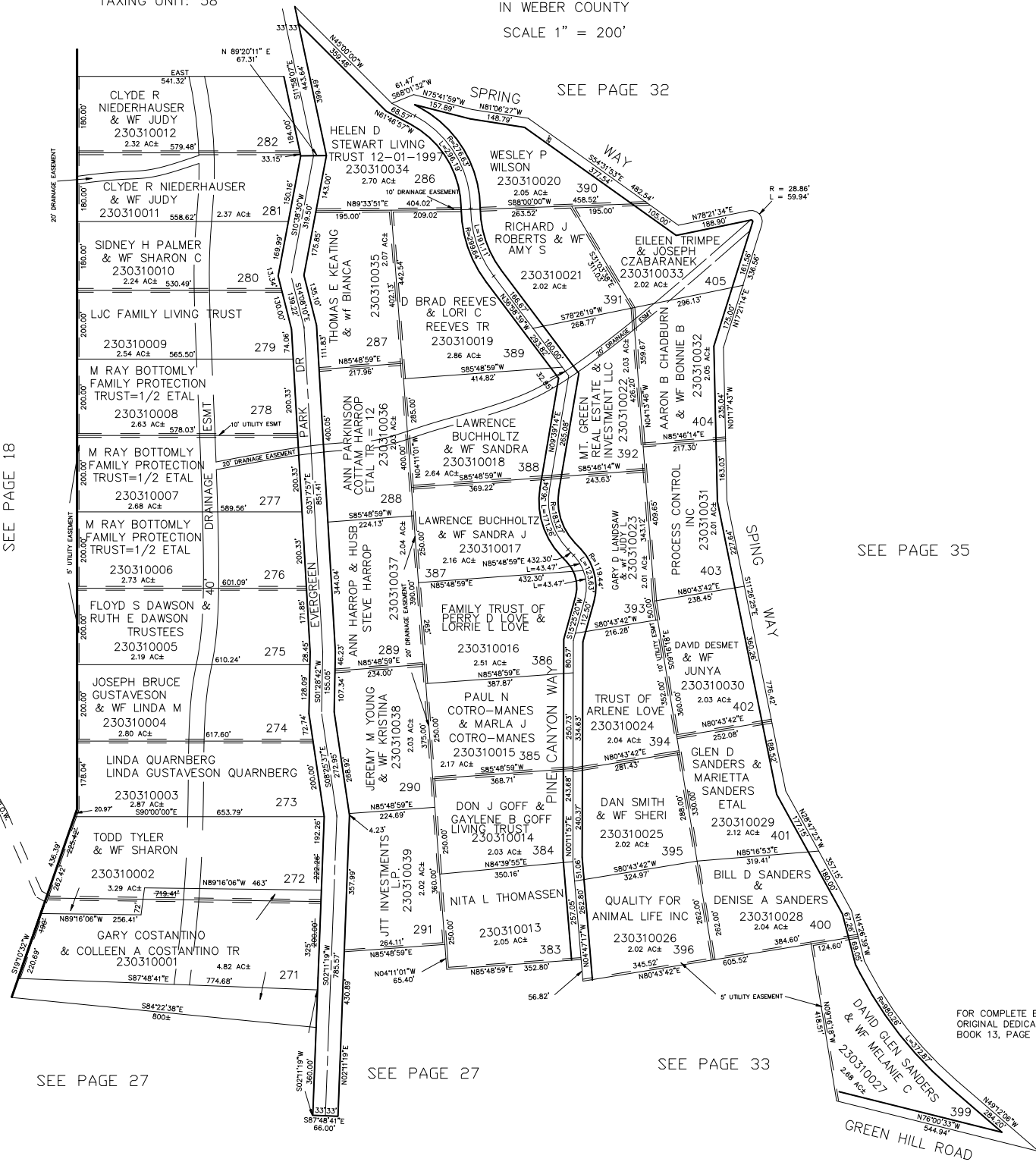


PART OF SEC. 29-30, T.7N., R.3E., S.L.B. & M.
EVERGREEN PARK SUBDIVISION NO. 1
LOTS 271-282, 286-291, 383-396, 399-405

TAXING UNIT: 58

IN WEBER COUNTY

SCALE 1" = 200'



SEE PAGE 18

SEE PAGE 27

SEE PAGE 27

SEE PAGE 32

SEE PAGE 35

FOR COMPLETE ENG DATA SEE ORIGINAL DEDICATION PLAT IN BOOK 13, PAGE 60 OF RECORDS.